

Sierra Radio Systems Station Controller

Raspberry Pi Host Adapter

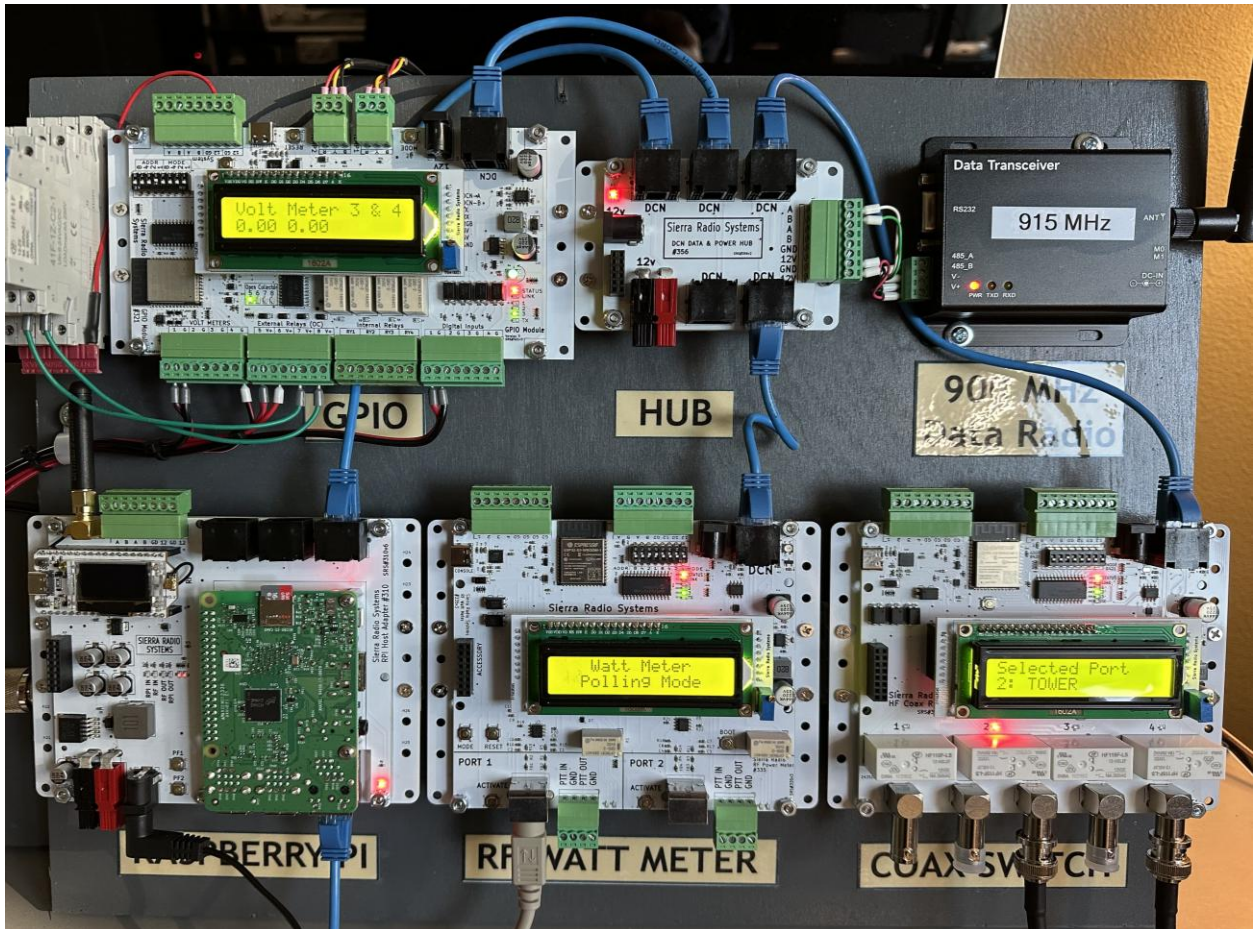


sierraradio.net

Version 1

Typical Hardware Installation

This example shows a typical system mounted to a plywood board using DIN rails and clips.



In the example pictured above you can see a full system including from top left:

- Optional 6A slim DIN rail mount SPDT relays
- GPIO Module
- Optional 5 port DCN power and data hub
- Optional 900 MHz DCN data radio

On the bottom row from the left:

- Raspberry Pi Module
- RF Watt Meter Module
- Coax Relay Module

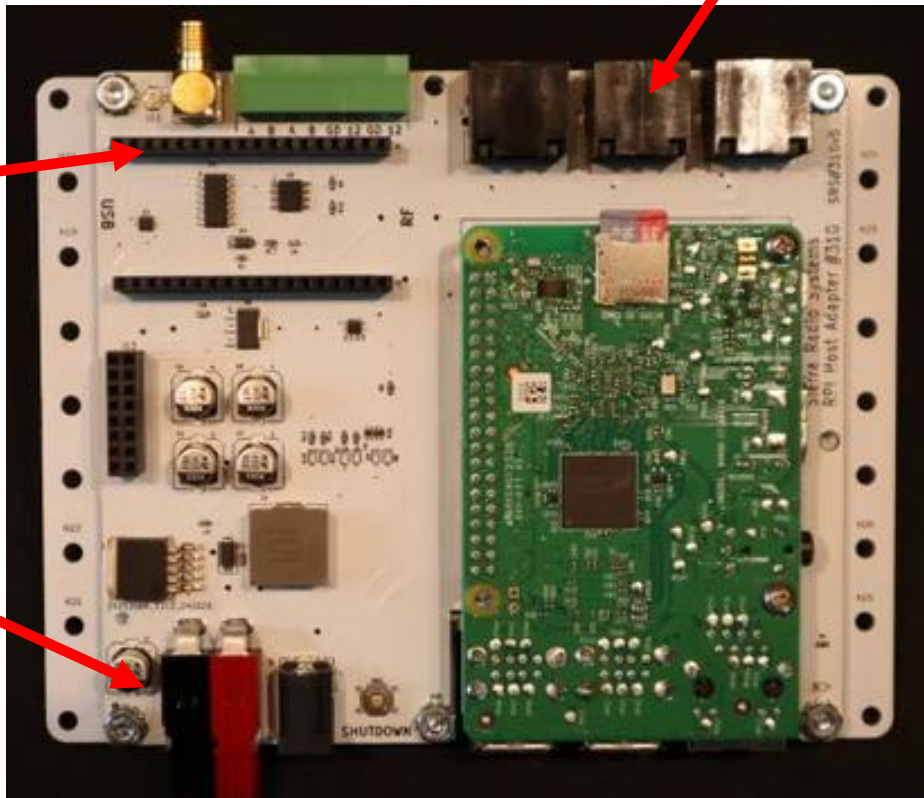
Raspberry Pi Host Adapter Module

DCN Network and
DC power terminals

3 port DCN data/power hub

Optional Heltec
v3 Meshtastic
radio module
socket

12 Volt power
in/out through
the power pole
or 2.1mm jack



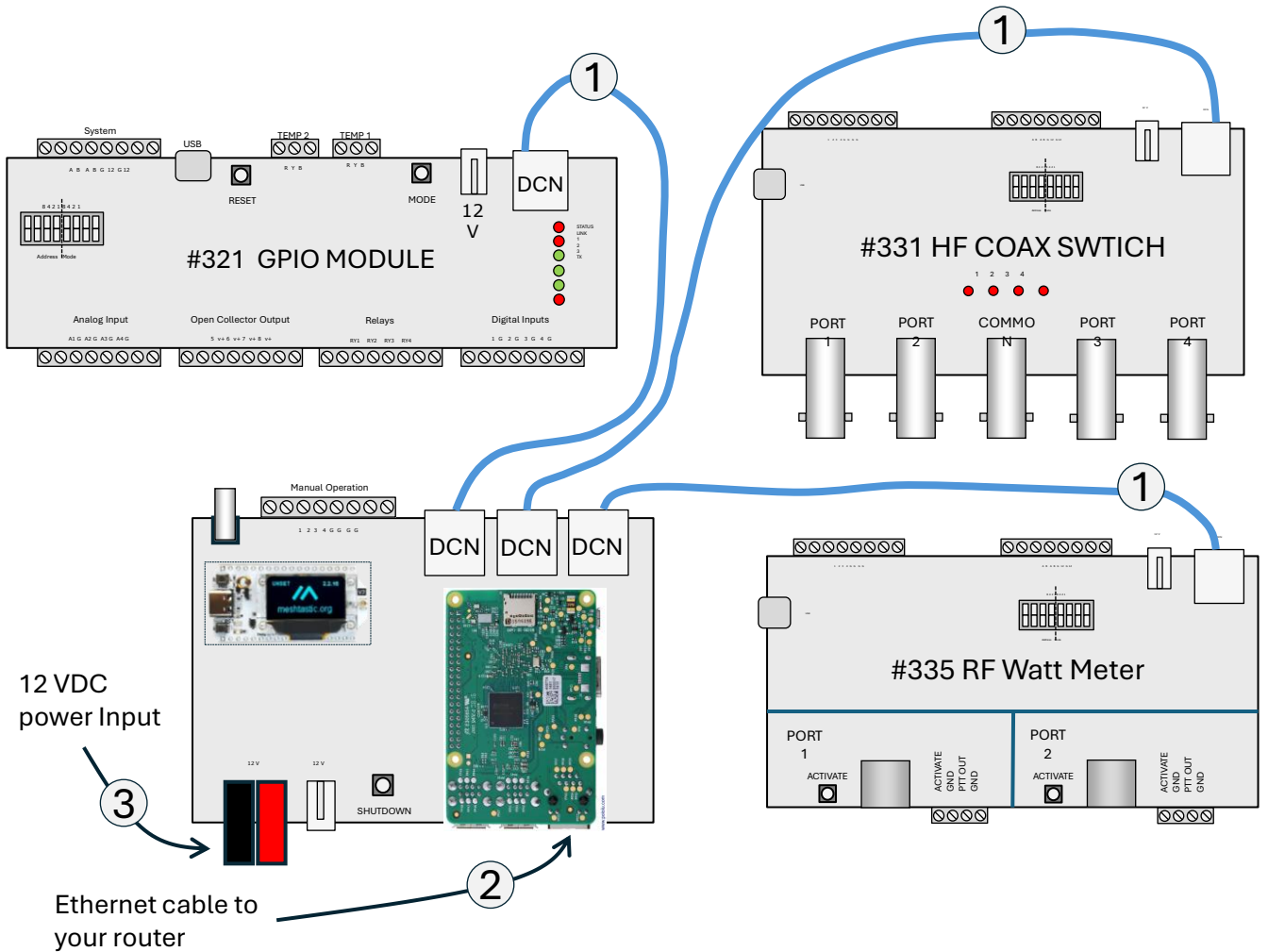
Port 1 & 2

Activate button – Manually activate RF power measurement on this port

PTT In – used in repeater systems to indicate if the transmitter is in transmit

PTT Out – Pull to ground to key repeater

6 pin mini DIN – RF directional coupler jack



In this open example, you only need three connections to get your system up and running.

- ① CAT6 cables between the Raspberry Pi host adapter module and each of the control modules. These provide power and data to the control modules.
- ② Ethernet cable from your router to the network jack on the Raspberry Pi
- ③ 12 VDC power input to the powerpole or 2.1mm barrel jack.