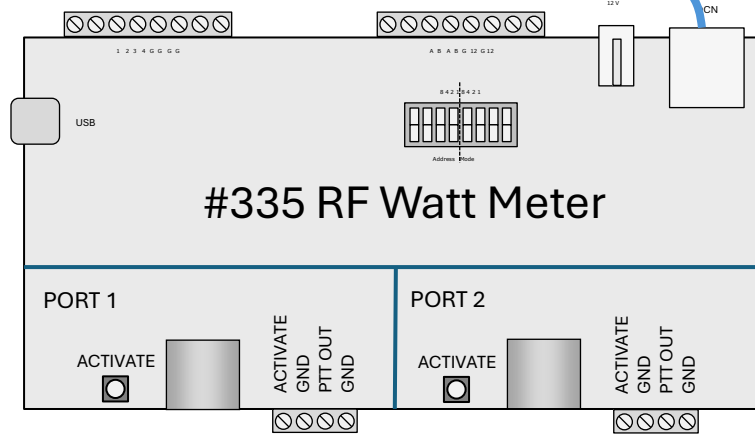
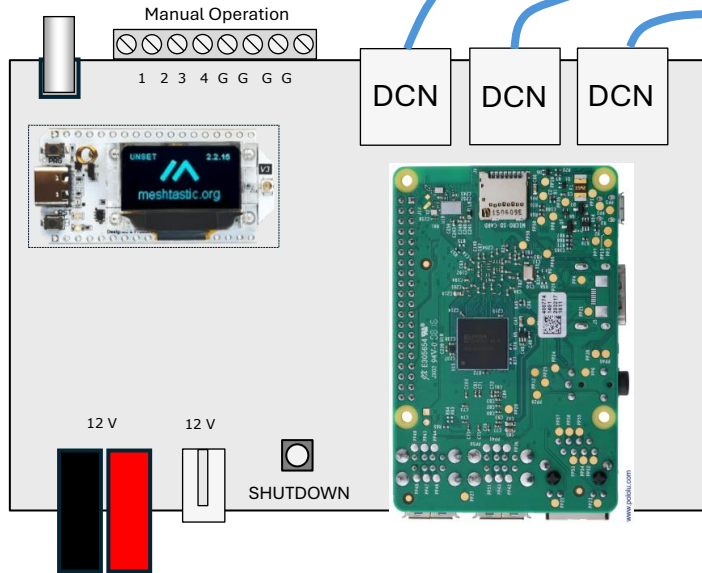
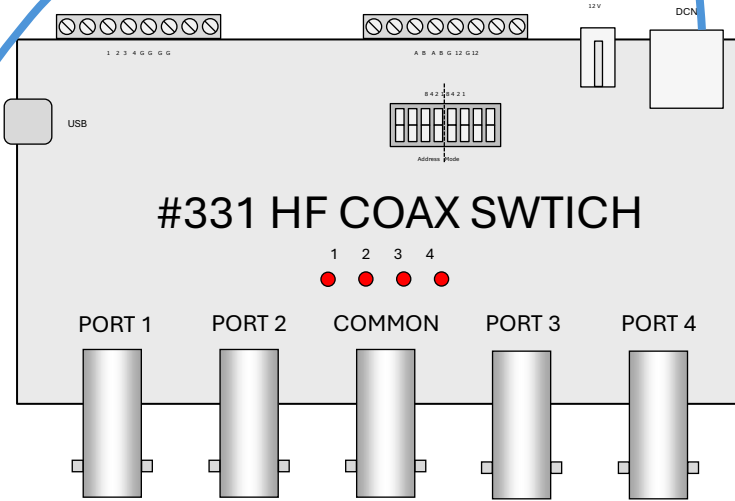
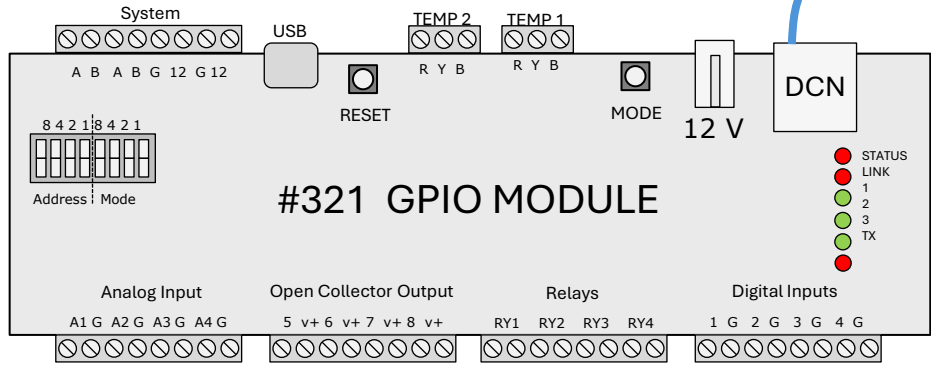


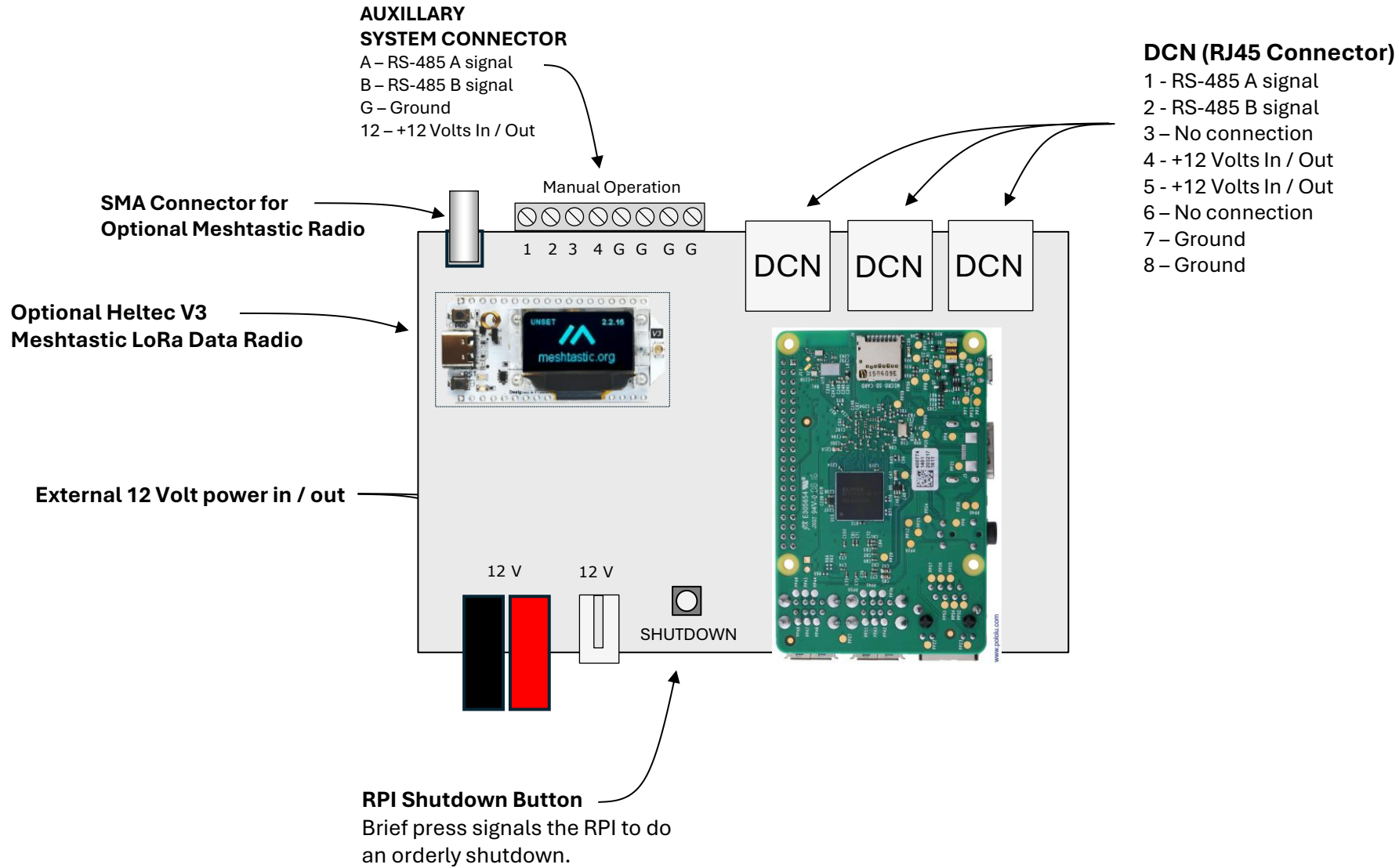
# Sierra Radio Systems

## Hardware Reference

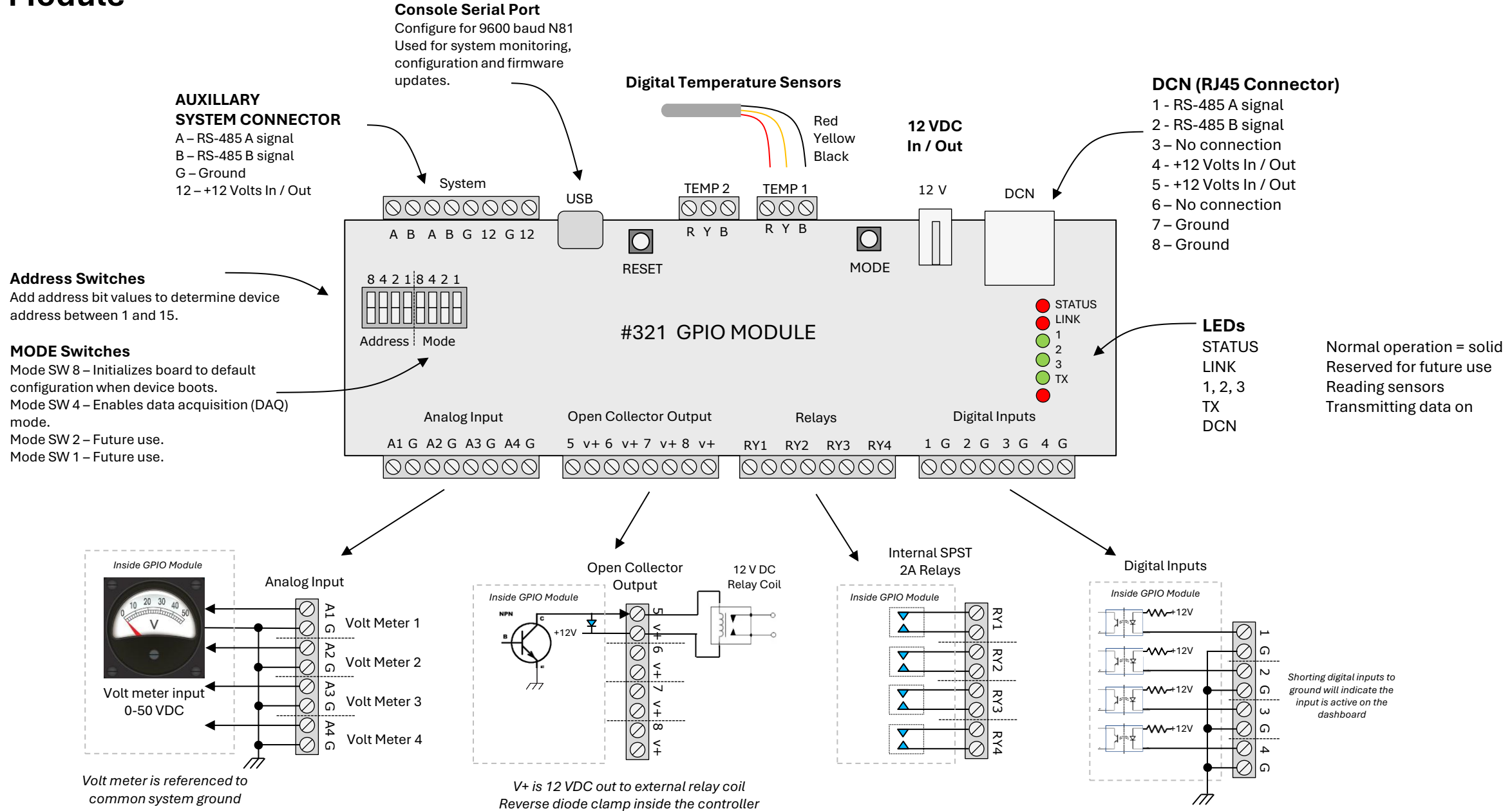
Version 1.0



# Raspberry Pi Host Adapter

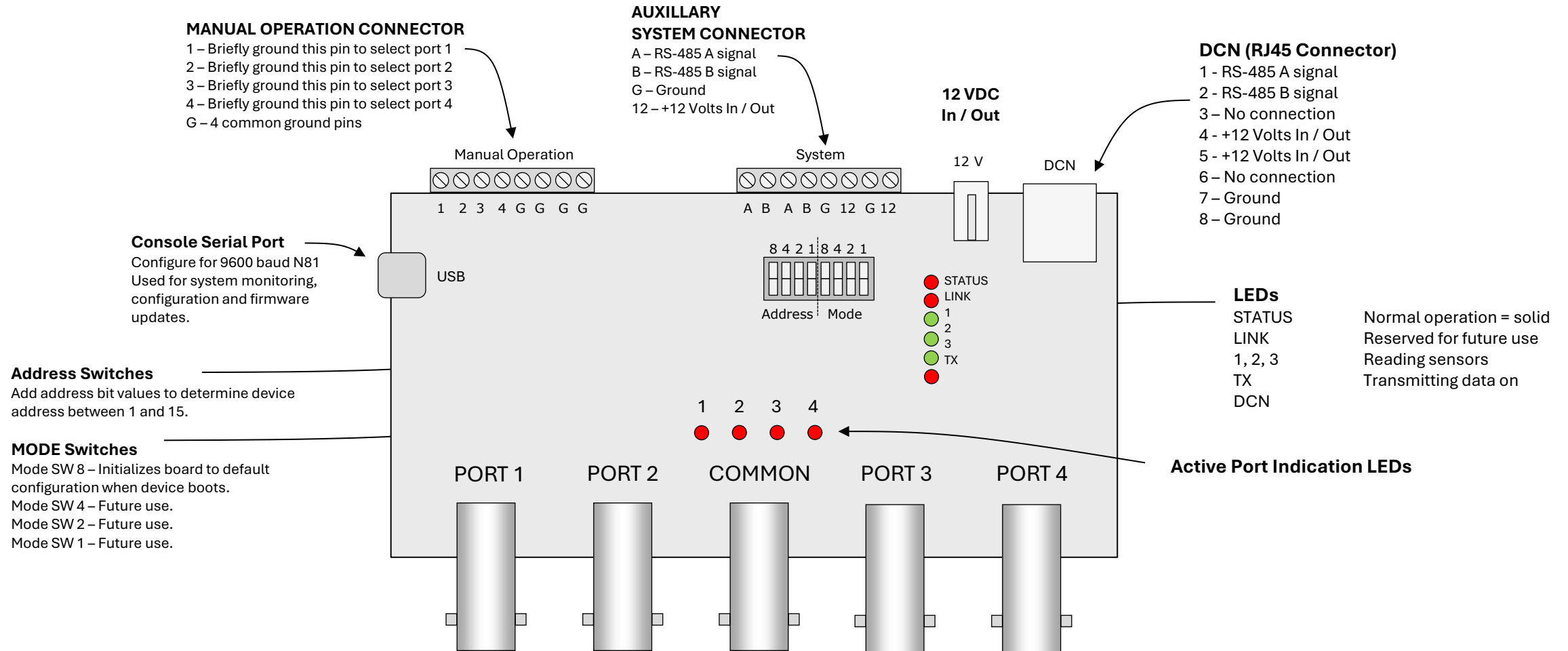


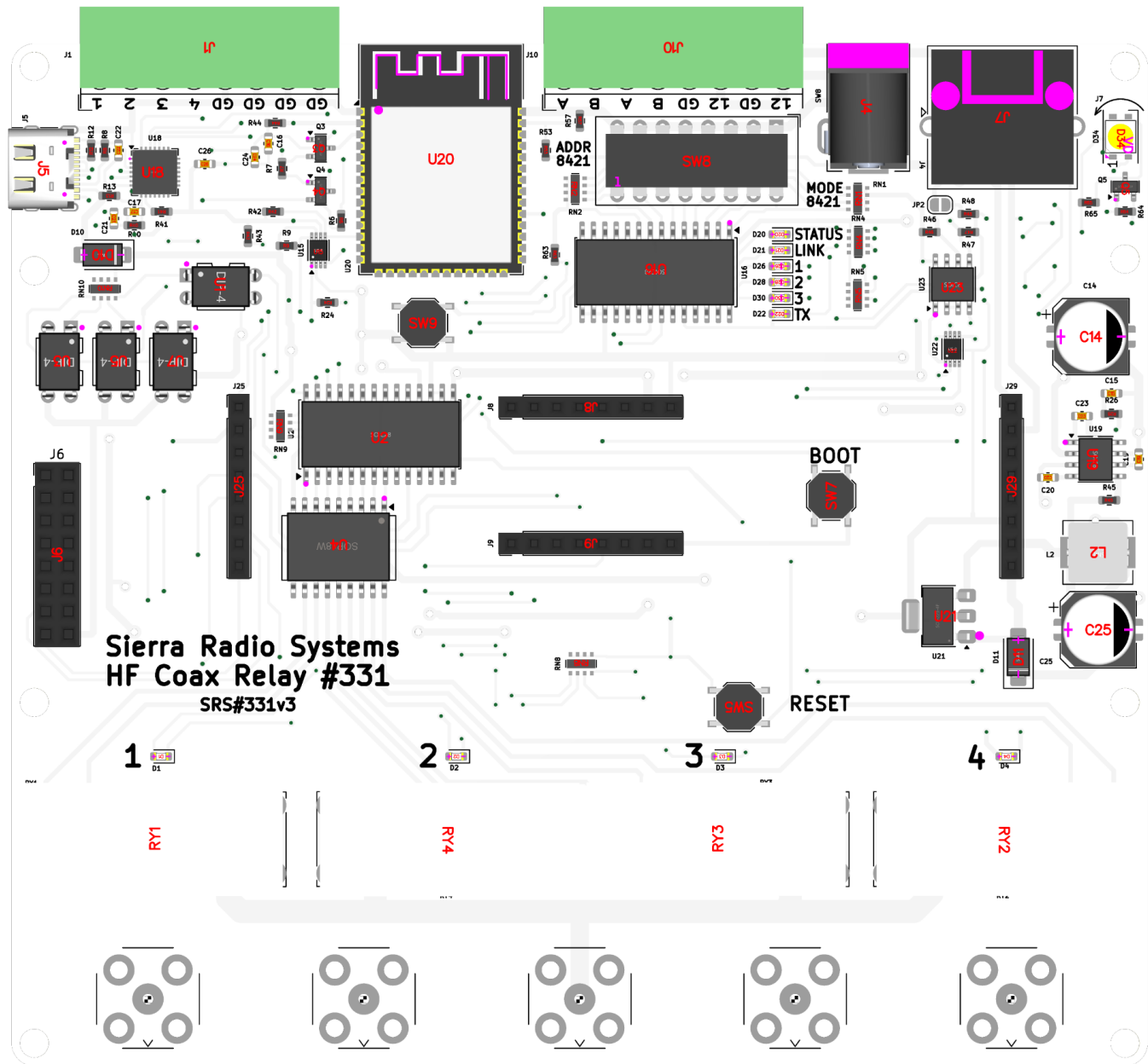
# GPIO Module





# 4 Port HF Coax Relay Module



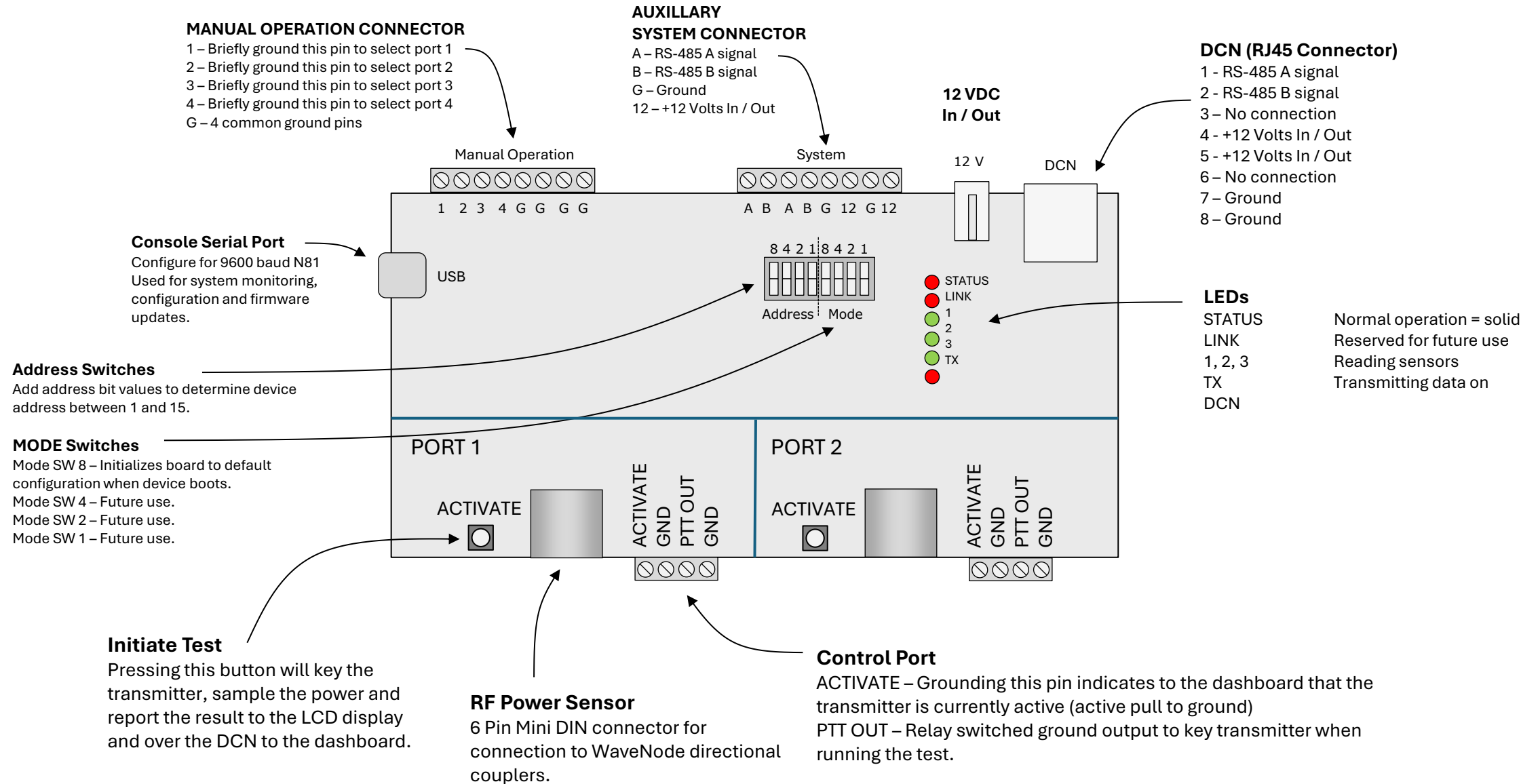


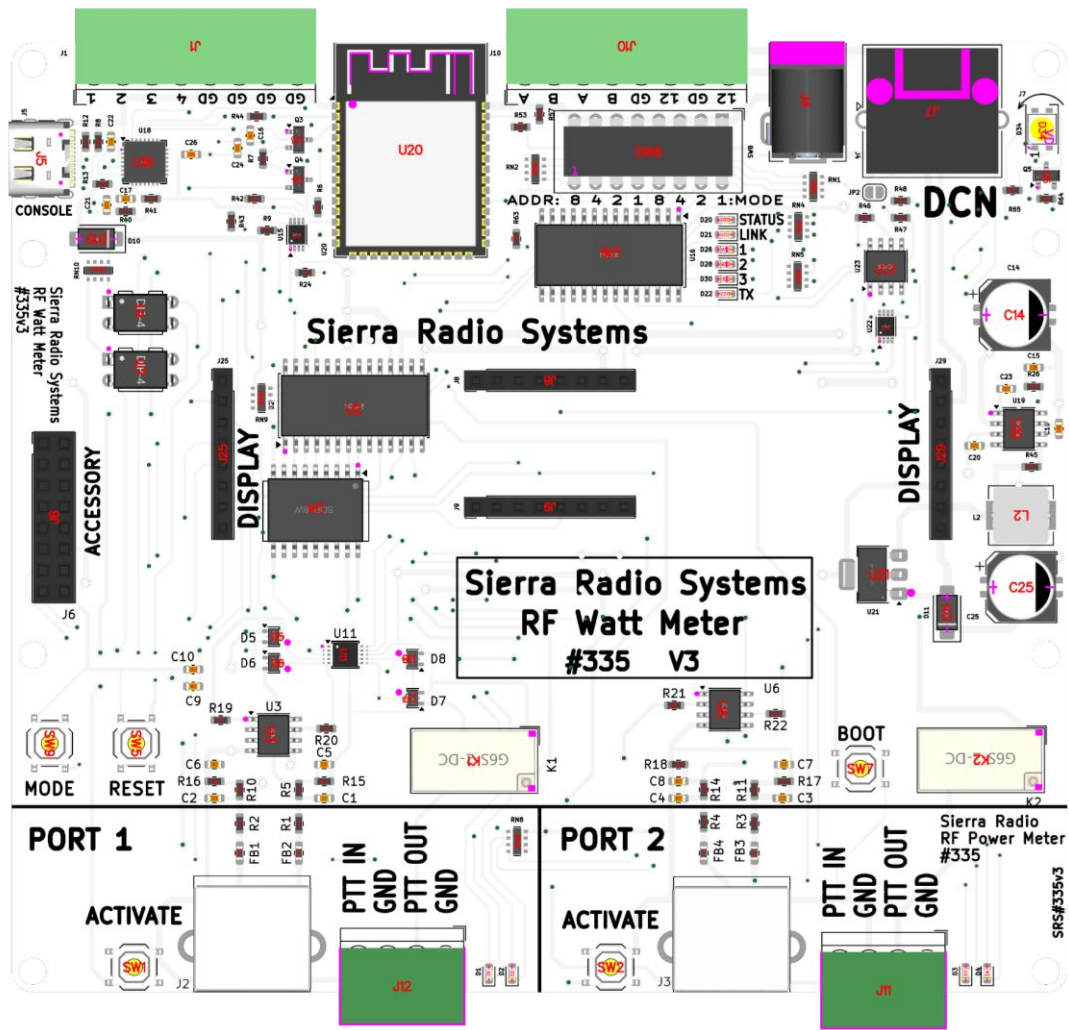
**Sierra Radio Systems**  
**HF Coax Relay #331**  
SRS#331v3

- 1 D1
- 2 D2
- 3 D3
- 4 D4

- RY1
- RY4
- RY3
- RY2

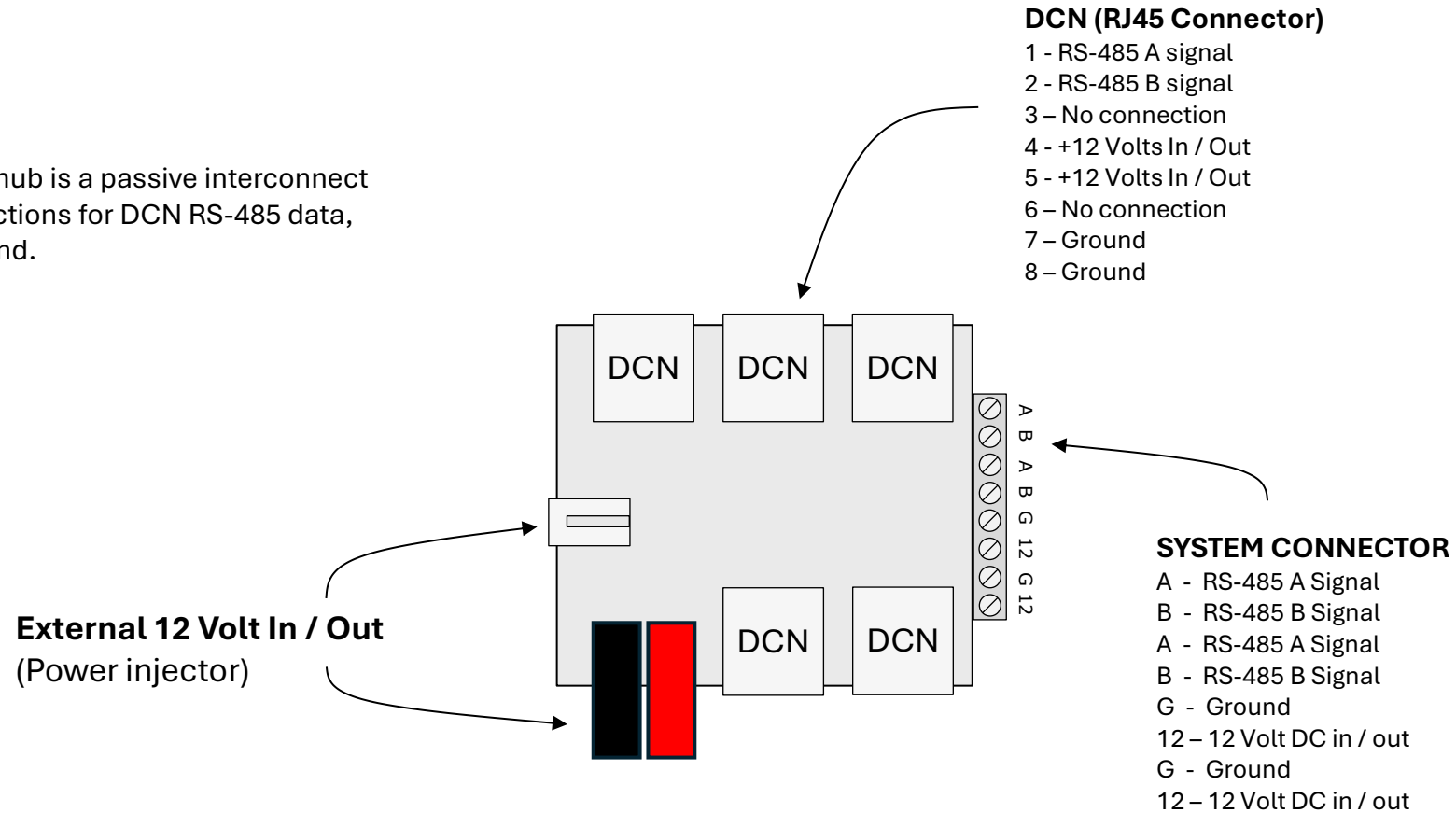
# 2 Port RF Watt Meter Module





# DCN Power / Data Hub

The DCN power / data hub is a passive interconnect board providing connections for DCN RS-485 data, 12 volt power and ground.

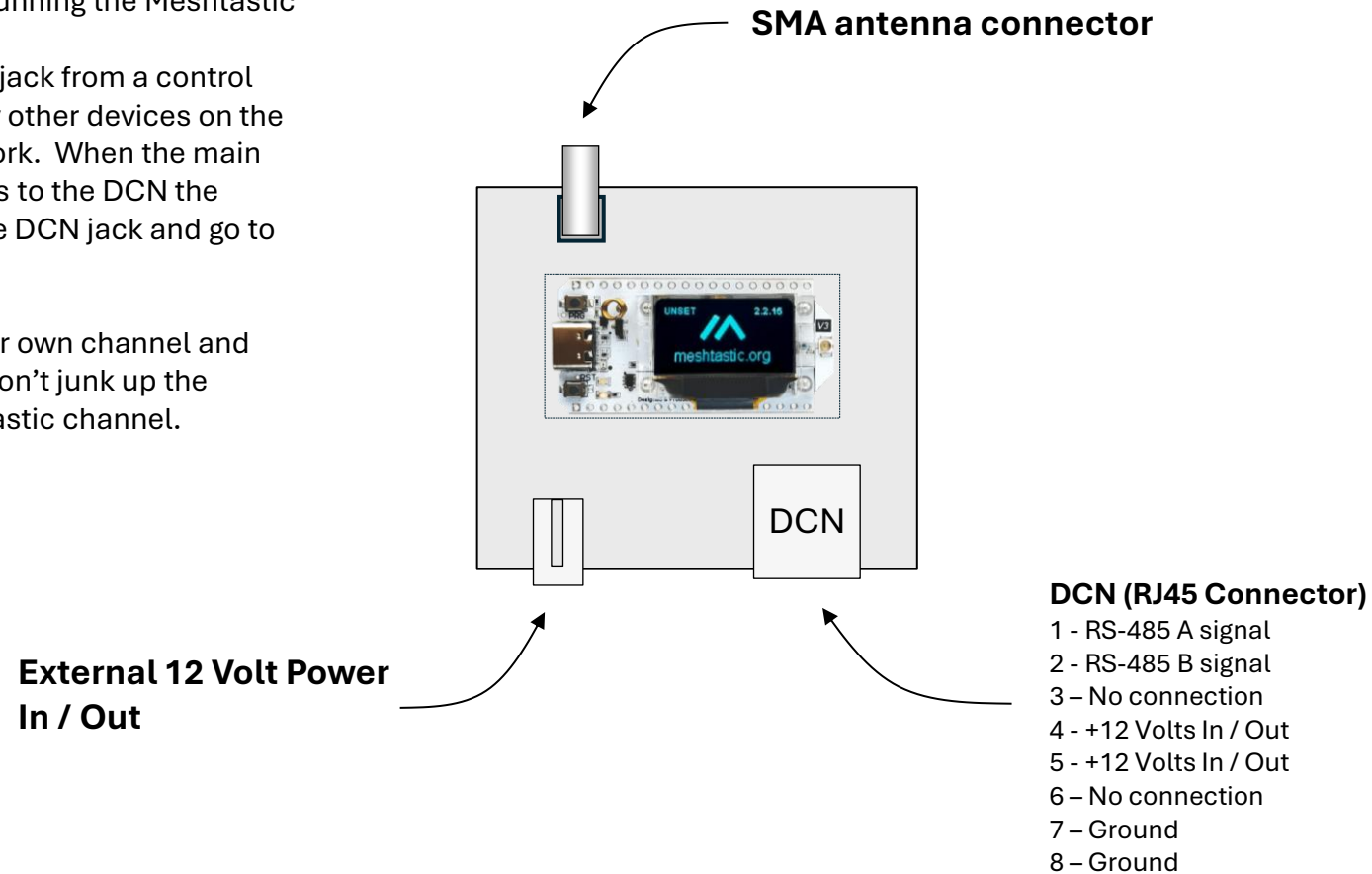


# Meshtastic Radio Module

The Meshtastic radio module allows you to extend the DCN using LoRa radios running the Meshtastic firmware.

Any data going into the DCN jack from a control module is transmitted to any other devices on the configured Meshtastic network. When the main dashboard sends commands to the DCN the commands will come out the DCN jack and go to the local modules.

Note: You should define your own channel and optional encryption so you don't junk up the common "Long Fast" Meshtastic channel.



# Typical 12v Slim DIN Rail Mount Relay

